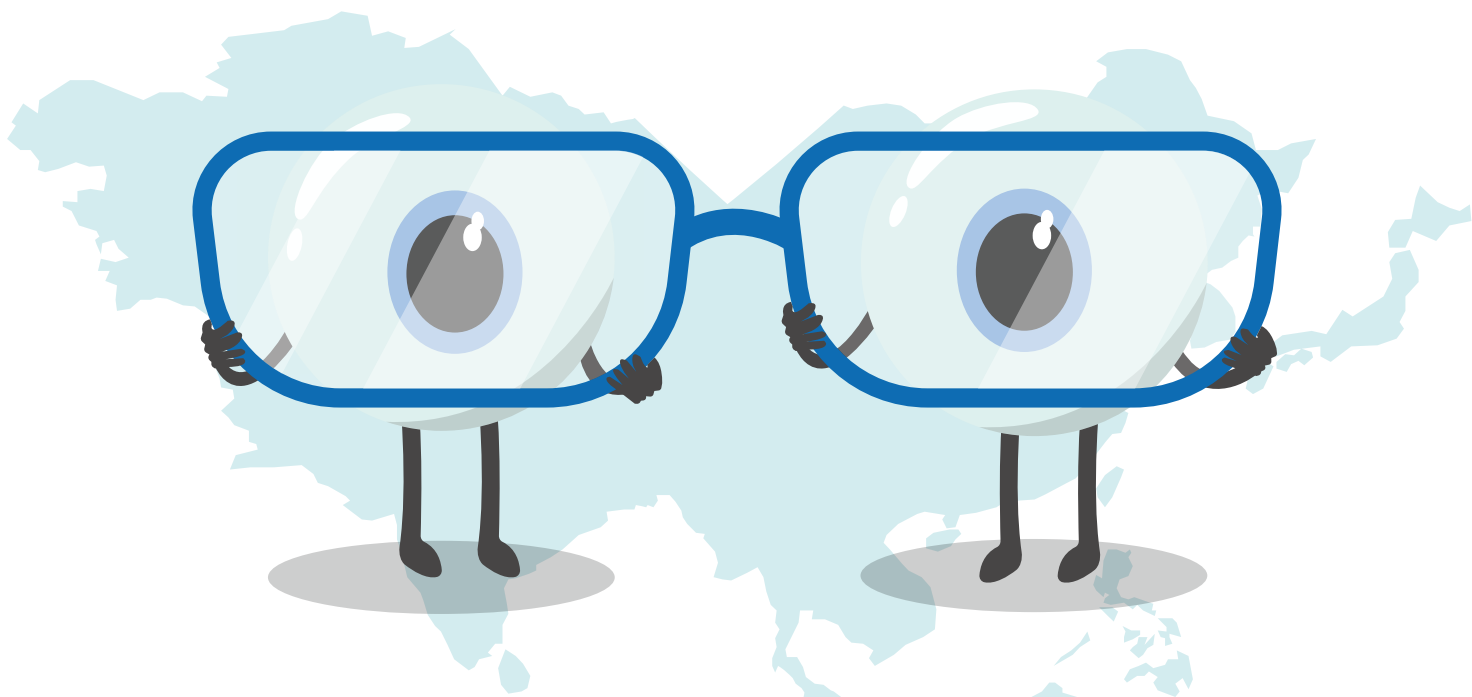


ALCON ASIA-PACIFIC EYE HEALTH INDEX

This World Sight Day, Alcon commissioned a survey to focus attention on misconceptions and behaviours that could be contributing to the global burden of vision impairment, and encourages all to take charge of their eye health.



Eye-opening statistics around vision impairment:



Every five seconds one person in the world goes blind¹

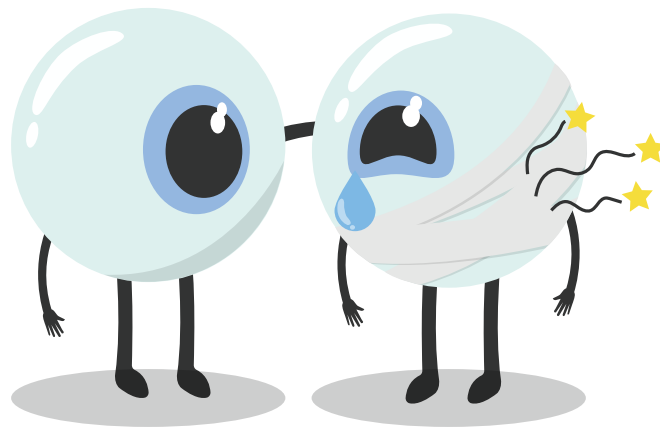


Asia is home to 62% of the world's burden of visual impairment¹



Untreated cataract and uncorrected refractive errors are the leading causes of blindness²

Yet more than **80%** of all vision impairments can be prevented or cured³.



Alcon Asia-Pacific Eye Health Index

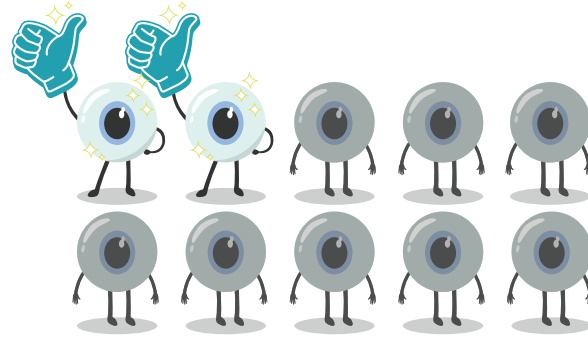
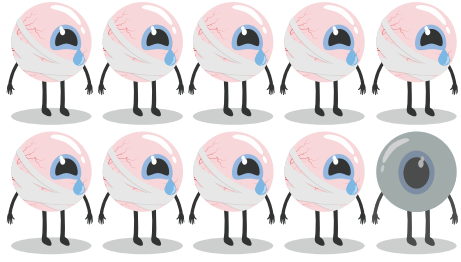


A total of 4,200 people were surveyed across five countries in Asia-Pacific: India, China, Australia, South Korea, Taiwan



The online survey looked into people's eye health knowledge, their vision care behaviors and their current eye health beliefs

While almost **9 in 10** have experienced problems with their vision in their daily lives,



only 2 in 10 have visited an eye doctor immediately to seek help

Knowledge gap persists:

Refractive errors, glaucoma and cataract are the top causes of vision impairment yet few are aware of the conditions, and even less know that they can be treated.



Cataract

48% of people are aware of cataract

Of those aware, **60%** do not know that cataract can be treated



Glaucoma

38% of people are aware of glaucoma

Of those aware, **70%** do not know that glaucoma can be controlled

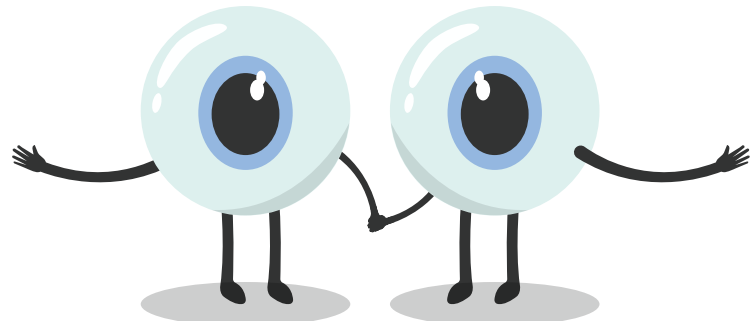


Refractive errors

39% of people are aware of refractive errors

Of those aware, **72%** do not know that refractive errors can be corrected

Universal eye health **is possible.** Visit your eye doctor today.



Alcon is the global leader in eye care. As a division of Novartis, we offer the broadest portfolio of products to enhance sight and improve people's lives. Our product touches the lives of more than 260 million people each year living with conditions like cataract, glaucoma, retinal diseases and refractive errors, and there are millions more who are waiting for solutions to meet their eye care needs. Our purpose is reimagining eye care and we do this through innovative product, partnership with eye care professionals and programs that enhance access to quality eye care. For more information, visit www.alcon.com.

¹ IAPB Vision Atlas, GBVI – Regional Estimates of Distance-Vision Loss. <http://atlas.iapb.org/global-burden-vision-impairment/gbvi-regional-estimates-of-distance-vision-loss/>, accessed 20 Aug 2018.

² World Health Organisation, Blindness and visual impairment. <http://www.who.int/news-room/fact-sheets/detail/blindness-and-visual-impairment>, accessed 20 Aug 2018.

³ World Health Organisation, 12 October 2017; World Sight Day. <http://www.who.int/blindness/en/>, accessed 20 Aug 2018.