

BBB_company Brief_2018





BBB

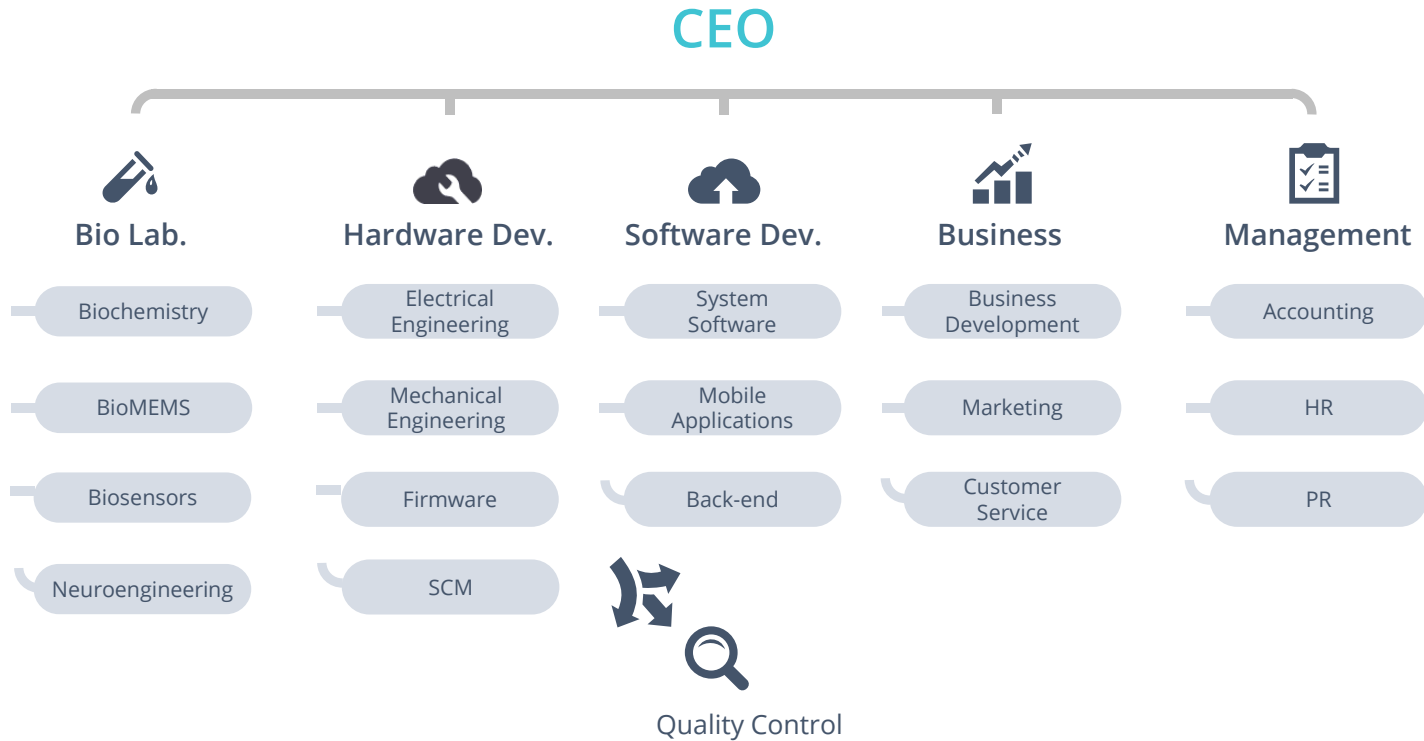
BBB Tech creates affordable blood-testing technologies with mobile-enabled tools and data insights.

BBB History





- 2017. 11 Launched elemark™ dual check in Korea
- 2017. 08 Signed OEM contract with GenBody Inc. for supply of rapid test readers for arboviruses and drugs of abuse
- 2017. 06 Signed MOU with Korea University Guro Hospital to develop next-generation immunodiagnostic kit for cancer, myocardial infarction, and chronic disease
- 2017. 06 Signed MOU with Pusan University to construct infrastructure to commercialize research
- 2017. 04 Signed OEM contract with Philosys Inc. for supply of glucometers for hospital use
- 2016. 08 Signed agreement with KT for use of elemark™
- 2016. 08 Raised \$5 million in Series A round
- 2016. 02 Signed strategic MOU with NOOM inc. targeting the mobile healthcare market
- 2015. 10 Winner of Zhongguancun Innoway “2015 Demo The World” in Smart Hardware Sector
- 2015. 08 Established regional office at NASA Ames Research Center, Silicon Valley, U.S.A.
- 2015. 05 Tech-In-Asia Award Winner @beGlobal Seoul 2015
- 2015. 04 Signed OEM contract with GreenCross MS for supply of in-vitro diagnostic devices for hospitals
- 2015. 01 Joined HAX Batch 6 program
(HAX, Hardware startup accelerator based in Silicon Valley and Shenzhen)
- 2014. 10 Founded headquarters in Korea

BBB Structure





Lab-on-a-chip Technology Development of mobile blood testing device for self and point-of-care (POC) diagnosis

-  **Blood cell and plasma separation**
Membrane and capillary flow-driven microfluidic blood plasma separation device
-  **Biological sample manipulation and immunological analysis**
Electro-kinetic and magnetic force-based electrochemical immunological analysis



Nano/Micro-Processing Technology

Development of nano/microstructure production technology for low-cost mass production. Production of plastic microfluidic chips and carbon nanoelectrodes



Biosensor Technology

Development of high-performance nano-biosensor materials and elements, highly sensitive electro-chemicals, and optical sensor technology



Brain Stimulation Treatment Technology

Personalized treatment combining AI and AR that treat depression, obesity, and addiction



Healthcare on a smart device
A premium device for healthy
blood biomarkers

elemark™

elemark™ is...

a smart medical device that empowers users to read and track their own blood biomarkers.

With elemark™, users can directly monitor major blood biomarkers (blood glucose, ketone-bodies, full lipid profile, etc.) to manage diabetes and chronic diseases.

It also features *elemark™ care*, a data-sharing function that enables your family members to manage your health together, and your doctor to provide a more accurate diagnosis through deeper and enhanced insights.

* elemark dual check: Measures blood glucose and ketone bodies for diabetic patients [Released in Korea, Nov. 2017]

* elemark lipid check: Measures full lipid profile (including triglycerides and LDL) [Coming soon, H1 2018]

elemark™: Smart Device

elemark™ is an Android device that has been customized for medical use.



A Second Smart Device

for use in conjunction with your smartphone

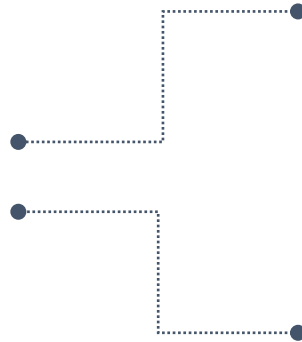
- OS : Android 5.1
- Size : 159.4mm X 81.2mm X 9.5mm
- Weight : 183g
- Touch Panel : full lamination, capacitive touchscreen
- Memory : 32GB ROM, 3GB RAM
- Wireless LAN : 802.11b/g/n
- 3G Bands : (WCDMA) 850/900/1900/2100MHz
- Features : Bluetooth, G-sensor, L-sensor, GPS, micro-SIM, etc.

elemark™: Multi-platform

*Expandable platform: various blood biomarkers can be monitored using attachable modules (medical devices)



Android smart device



elemark™
dual check

elemark™ + dual check module
Diabetes Care



elemark™ lipid check

elemark™ + lipid check module
Cardiovascular Disease Care

elemark™: Cloud Server

All data is stored on the elemark™ cloud server and enables third-party sharing and real-time monitoring



elemark™ dual check



Measure blood glucose and ketones



Test time: Glucose 5 sec / Ketones 7 sec



Automatically upload results to the cloud



Creates data analysis charts



Share your data with family and doctors

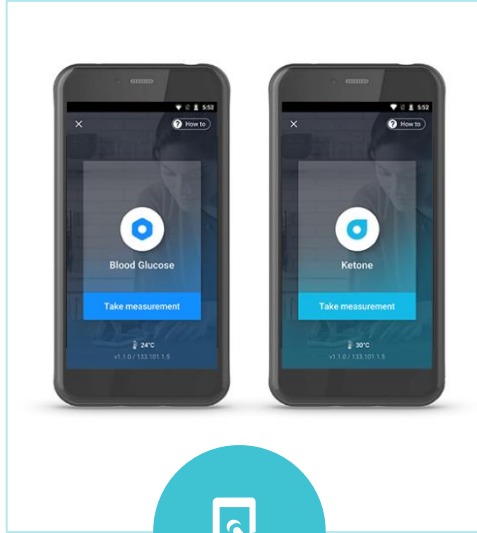


Manage diabetes in a more systematic manner with the medical device, *dual check*, an attachable module exclusive to elemark™, that monitors glucose and ketone levels in the blood.

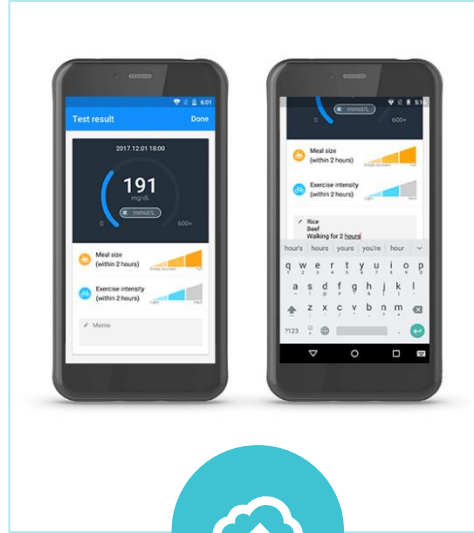
elemark™
dual check



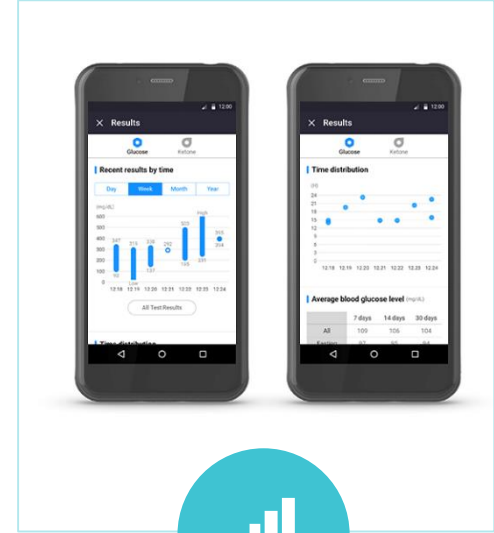
elemark™ dual check



Monitor blood glucose and ketones with a single device
-Glucose: results in 5 sec
-Ketones: results 7 sec



Measure & upload results in real-time
Just tap to record exercise and meal size
Record any additional information



Automatically create cumulative data charts
Recent results by biomarker
Time of test. Mean value.
Minimum and maximum values.

elemark™ dual check



elemark™ dual check set

All-inclusive package of elemark™ and consumables for blood glucose/ketone tests
elemark™, dual check, protective case, carrying case, Softclix lancing device,
100 lancets, 100 alcohol swabs, 50 dual check glucose test strips, 10 KetoSens ketone test strips

elemark™ dual check



elemark™ dual check set Special Box

elemark dual check's accessories in colored boxes
Delivered in a package with consumables for glucose/ketone tests

elemark™ lipid check



Monitor full lipid profile



TC. TG. HDL. LDL



Reflectance Photometry



Results in 3 mins

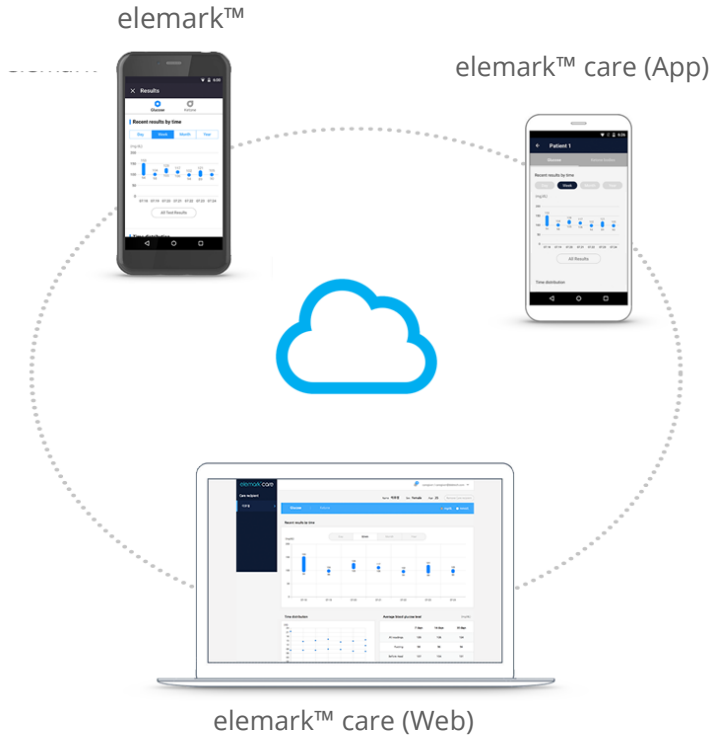


Automatically save results



Manage chronic diseases, such as high blood pressure, hyperlipidemia, and arteriosclerosis at all times by measuring your lipid profile using the medical device, *lipid check*, an attachable module exclusive to elemark™.

Software: **elemark™ care**



Share with your caregiver: **elemark™ care**

Reliable Family Care
Accurate Diagnosis & Swift Response

Health monitoring platform for long-distance family and elderly parents
Transmit data to the doctor for accurate diagnosis



BBB

We create new products, new experiences, and a new platform.

